

Ifriqiya ERP & CRM

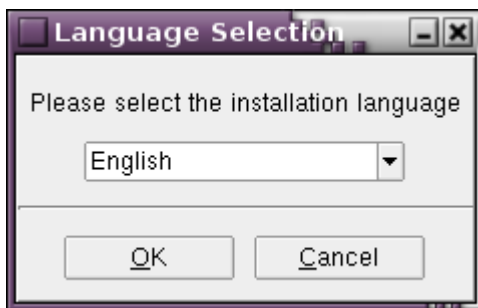
REQUIREMENTS

You need a MAXDB installation on the machine where you want to host the Ifriqiya database. If MAXDB is not installed please refer to the following link: <https://www.sdn.sap.com/irj/sdn/maxdb?rid=/webcontent/uuid/707ce80e-3b53-2910-529c-dce412dfe9b1>

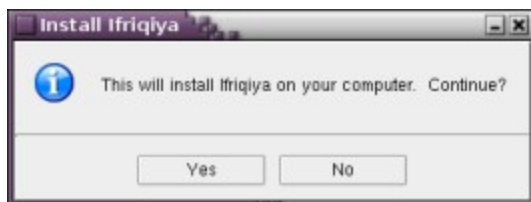
INSTALLING IFRIQIYA ON LINUX

Requirements: libstdc++.so.5.

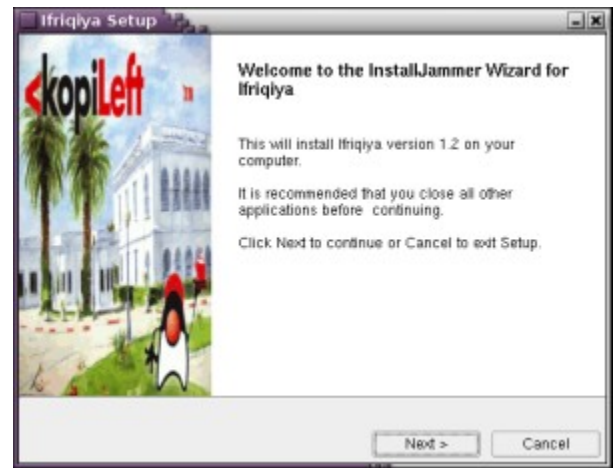
1. Download ifriqiya installer for Linux.
2. Open a root shell.
3. Change to the directory that contains the Ifriqiya installation package you have downloaded.
4. To start Installation Manager, enter `./Ifriqiya_1.2-linux-Setup`, the following dialog screen will appear:



5. Chose the language of installation, then press "Yes" button.



The following dialog screen will appear:



Press the "Next" button to continue the installation, the following dialog screen will appear.





To choose the destination folder, please press the “Browse” button, choose the folder where you want to install Ifriqiya and finally click on the “Next” Button. The following dialog screen will appear



Press on the “Next” button, the following dialog screen will appear.



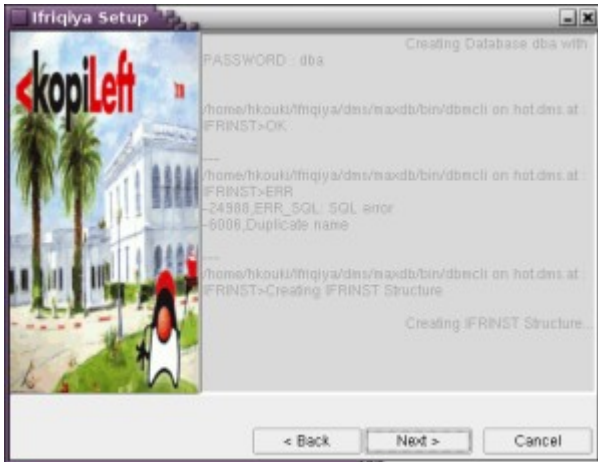
- ✓ Host name/address: the name of the machine hosting the database
- ✓ Database name: the name of the database where the Ifriqiya database schema will be created.
- ✓ Database user: the name of the user that will be used to connect to the already entered database
- ✓ database password: the user password
- ✓ Language: the language that will be used to launch ifriqiya
- ✓ With data: If checked the database will be created with demo data, otherwise the database will be empty.

This dialog screen will be filled as follow:





After filling the necessary information, please click on the “Next” Button, the following dialog screen will appear:



Please wait, while the installation process complete the database structure and data creation.

After completing the database creation, the following dialog screen will appear:



INSTALLING IFRIQIYA ON WINDOWS

Requirements: Microsoft Windows 2000 SP2 or higher.

1. Download the Ifriqiya installer for Microsoft Windows.
2. Change to the directory that contains the Ifriqiya1.2 package you have downloaded.
3. To start Installation Manager, double-click Ifriqiya_1.2-windows-Setup.exe.
4. Please follow the instructions from the step 5.